



wet sounds®
High Performance Audio

R400 Audio System

RY11170-AS



Applications:

2022 & Newer Yamaha FX WaveRunners with Factory Audio

NOTE: Models *without* Factory Audio require 'Audio Upgrade Installation Kit' (F5G-U81AC-V0-00).

Approximate Installation Time:

1 hour

GET THE LATEST UPDATES!

Prior to installation, go to the RIVA Racing online Instruction Library to download the latest version of these instructions:

<https://rivaracing.com/instructions>

Recommended Specialty Tools:

Variable Temperature Heat Gun

Part #

N/A

Required Materials:

Blue Loctite

Part #

N/A

Your kit was inspected and verified before being carefully packaged by our staff. Please check package contents before beginning assembly. If you have a question about missing or damaged items please contact RIVA Technical Support directly at (954) 247-0705 or by e-mail at tech_support@rivaracing.com.

We strongly recommend the use of a service manual to familiarize yourself with the various components and procedures involved with this installation. Please note that some of the original hardware removed in the disassembly process will be used in the installation process. These instructions have been written in step-by-step format and refer to illustrations. Read through instructions entirely before performing installation. Please follow these step-by-step instructions and illustrations carefully.

***** NO SMOKING *** NO SMOKING *** NO SMOKING *****

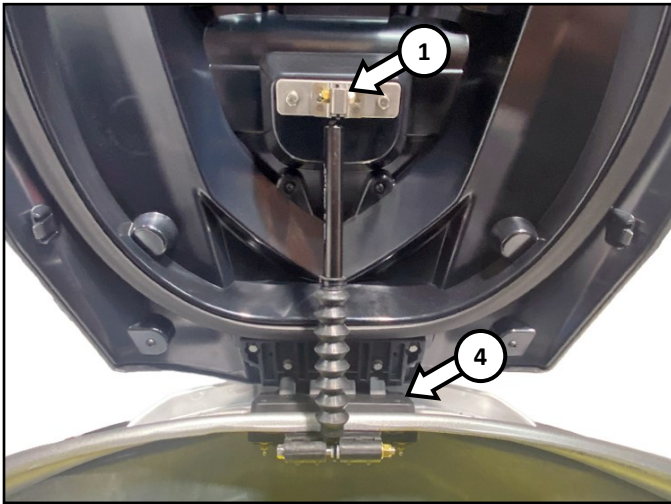
***** VENTILATE INSIDE OF HULL COMPLETELY BEFORE PERFORMING INSTALLATION *****

Caution: Whenever using electric or battery operated tools inside the hull be sure it is well ventilated and no fumes are present. Failure to do so could result in a fire, or explosion and serious personal injury or death.

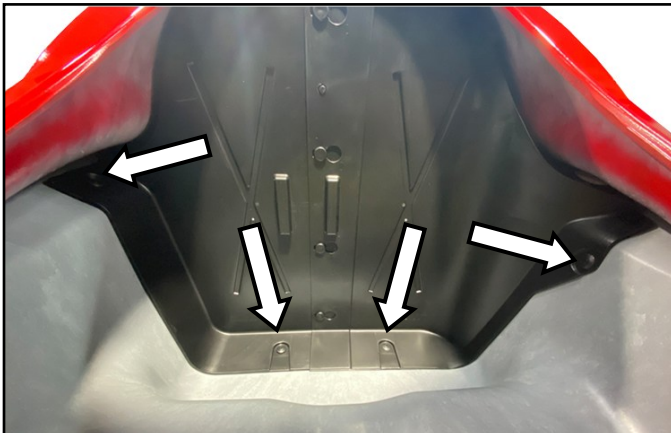
- INSTALLATION INSTRUCTIONS -

Remove seats.

Remove front storage compartment hood (5 bolts). One bolt at top of hood support and four bolts securing hood bracket to hull.



Inside front storage compartment, remove screws/rivets (4) securing bulkhead to hull.

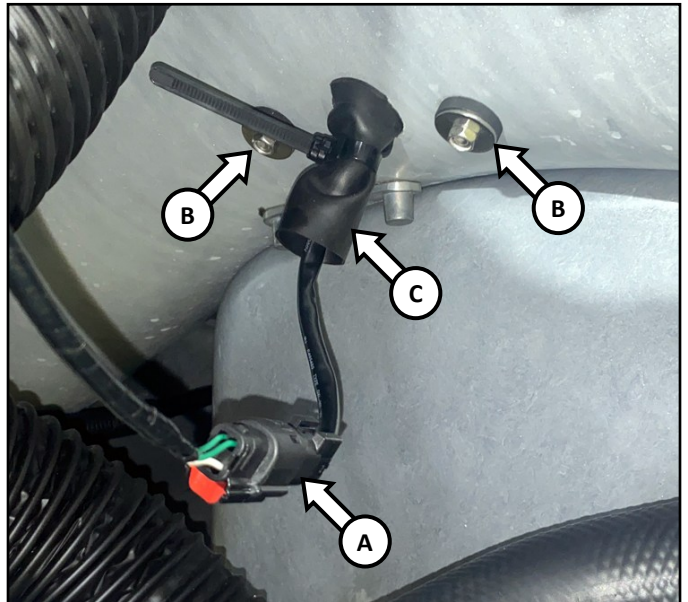


Separate bulkhead along center vertically. Remove both sections of bulkhead and set aside.

At base of speaker pods, remove bolts (1 each side) securing speakers to hull brackets.



Inside hull, locate speaker wires and disconnect at connectors (A - 2 at right side / 1 at left side).



Inside hull, remove bolts (B) securing speakers to hull.

Remove speaker from hull bracket by sliding speaker forward, then lifting up. **NOTE: Speaker wires are enclosed in a rubber grommet (C) seated in hull. Carefully push grommet from inside while pulling wires/speaker from outside.**

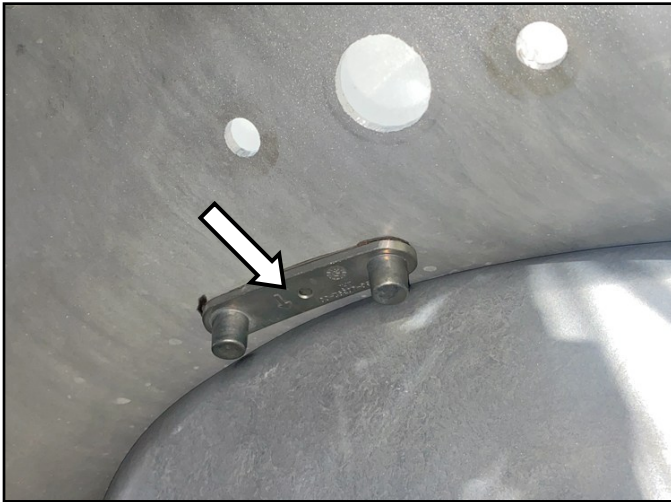
Remove bolts (2 each side) securing speaker brackets (1 each side) to hull.



Warm brackets using a variable temperature heat gun or hair dryer to loosen adhesive backing. Carefully remove brackets and discard. **NOTE: Do not use open flame/torch. Ensure fuel filler cap is properly secured. Direct heat away from fuel filler cap.**

- INSTALLATION INSTRUCTIONS -

Inside hull, **warm** brackets (1 each side) using a variable temperature heat gun or hair dryer to loosen adhesive backing. Carefully remove brackets and discard. **NOTE: Do not use open flame/torch. Use caution near fuel filler hose.**



Thoroughly clean *outside* of hull with a non-residual cleaner where original speaker was mounted. **NOTE: Ensure outside of hull is free of dust.**

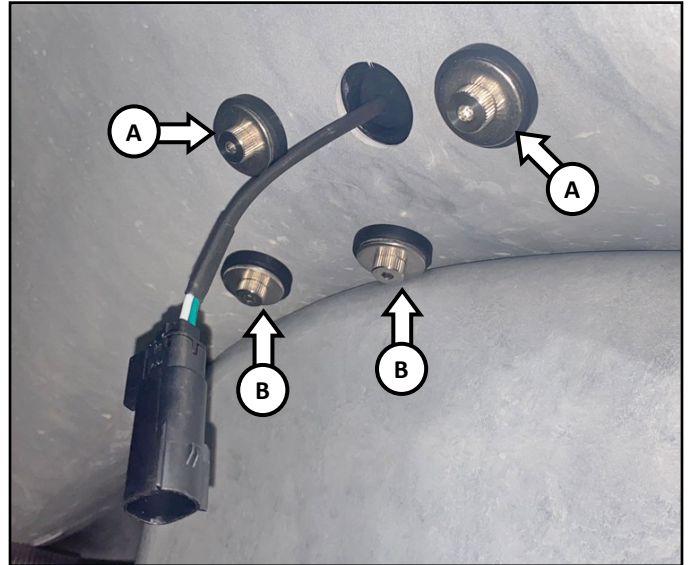
Apply supplied gaskets to *outside* of hull. **NOTE: Ensure holes are aligned. Gaskets are identical and can be used on either side of craft.**



TIP: Apply glass cleaner to surface of gasket to make it easier to align bolt holes for the following next 2 steps.

Pass electrical connectors on supplied speakers through largest hole in gasket/hull (2 at right speaker / 1 at left speaker) and set speaker in place against gasket.

Secure speakers to hull using supplied hardware (LONGER shoulder bolts at top holes [A] / SHORTER shoulder bolts at bottom holes [B]). **See important notes below.**



⚠ DO NOT USE ELECTRIC OR IMPACT TOOLS ⚠

- Ensure metal washer and compression washer are oriented correctly on bolts.
- Apply blue Loctite to bolt threads.
- Using a hand tool, tighten each bolt 2~3 turns at a time in a crisscross pattern until shoulder of bolt stops against speaker.

⚠ DO NOT OVERTIGHTEN BOLTS! ⚠

Connect speakers to audio power harness connectors (2 at right side / 1 at left side). **NOTE: Ensure connectors lock together securely.**

BEFORE YOU LISTEN

On your mobile device, go into the sound settings for each App that you use and do the following where applicable:

- Turn off *any* EQ settings
- Set cellular streaming to highest quality
- Set audio output to highest quality
- Turn off "normalization" in your audio menu

Connect Bluetooth device and *crank it up!*

Replace front storage compartment bulkhead and secure using screws/rivets (4) previously removed.

Replace front storage compartment hood (5 bolts). **NOTE: Do not apply Loctite. Torque to 3.7 ft•lb (5 N•m).**



wet sounds®
High Performance Audio

R400 Audio System

RY11170-AS

***Remember, the water belongs to everyone.
Please ride responsibly and respect the environment!***

Technical Support

For answers to questions regarding installation or trouble shooting RIVA Performance Products contact:

RIVA Technical Support directly at (954) 247-0705 or by e-mail at tech_support@rivaracing.com.

Limited Warranty

RIVA/Wet Sounds Audio Speakers carry a 2-year limited warranty to the original purchaser. They are warranted to be free of defects in materials and workmanship under normal use and service. Customer modified components will be void of warranty. This warranty is limited to defects in the primary components only. Finish and/or wear marks in or on primary components are not covered under this warranty.

RIVA Racing's liability is expressly limited to the repair or replacement of the components contained within or associated with this kit. RIVA Racing agrees to repair or at RIVA's option, replace any defective unit without charge, if product is returned to RIVA Racing freight prepaid within the warranty period. Any equipment returned which, in RIVA's opinion, has been subjected to misuse, abuse, overheating or accident shall not be covered by this warranty.

RIVA Racing shall have no liability for special, incidental or consequential damages or injury to persons or property from any cause arising from the sale, installation or use of this product.

No other warranty, express or implied, including, but not limited to the implied warranties of merchantability and fitness for a particular purpose, applies. Various states do not allow for the limitation of incidental or consequential damages and therefore the above exclusion or limitation may not apply to you.

Warranty does not include the expenses related to freight or transportation of parts or compensation for any inconvenience or loss of use while being repaired. A copy of the original invoice and a Return Authorization Number (RA#) must accompany all warranty claims.

Warranted replacement parts will be returned freight collect.